

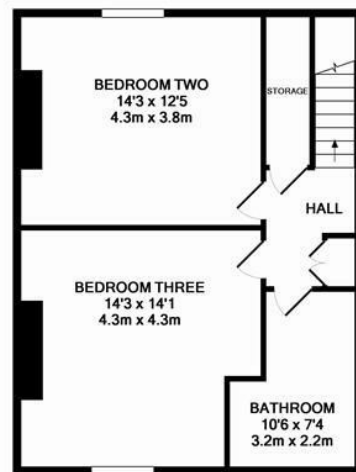


****AVAILABLE AUGUST 2026**** ****£160PPPW****

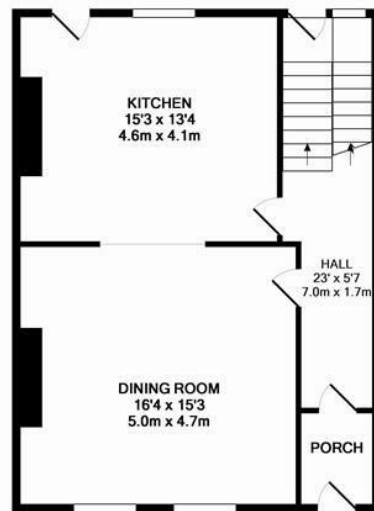
****FURNISHED**** A gorgeous period terraced house in the heart of Newcastle City Centre. Found on highly sought after St Thomas Crescent, this four-story town house boasts four bedrooms, two bathrooms, open plan kitchen dining room, full width lounge and a private rear yard!

The accommodation briefly comprises an entrance hall on the ground floor, large dining room open plan to a smart fitted kitchen. Down to the lower ground floor you will find two double bedrooms and a modern bathroom. The first floor comprises a stunning full width lounge with feature fireplace as well as a large master bedroom. The top floor has a further two double bedrooms and a second bathroom WC. Externally there is a private rear walled garden, accessed either via the kitchen or rear stairway. To the front there is on street permit parking.

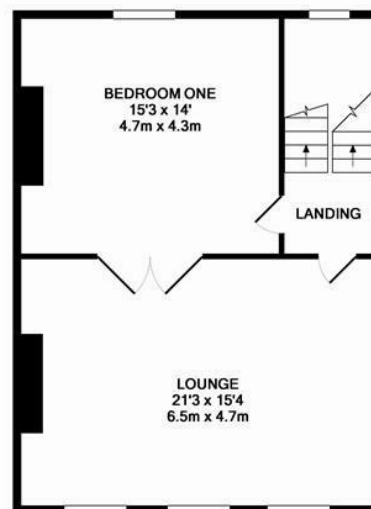
Available 15th August 2026 | £160pppw/
£2,773pcm | Furnished | Terraced House | 2,161
Sq. ft (200.7 m2) | Full Width Lounge | Open Plan
Kitchen Dining Room | Four Double Bedrooms |
Two Bathrooms | Private Rear Garden | GCH &
DG | Permit Parking | Highly Sought After
Location | Council Tax Band: E | EPC Rating: D



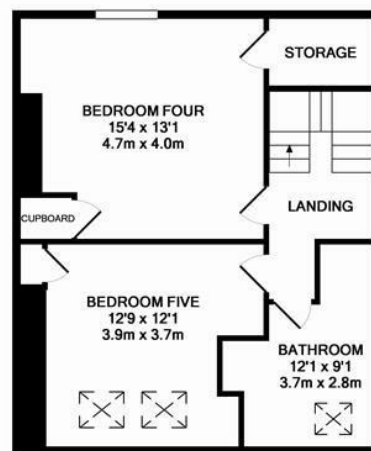
LOWER GROUND FLOOR
APPROX. FLOOR
AREA 505 SQ. FT.
(46.9 SQ. M.)



GROUND FLOOR
APPROX. FLOOR
AREA 578 SQ. FT.
(53.7 SQ. M.)



1ST FLOOR
APPROX. FLOOR
AREA 578 SQ. FT.
(53.7 SQ. M.)



2ND FLOOR
APPROX. FLOOR
AREA 500 SQ. FT.
(46.4 SQ. M.)

TOTAL APPROX. FLOOR AREA 2161 SQ. FT. (200.7 SQ. M.)
Whilst every attempt has been made to ensure the accuracy of the floor plan contained here, measurements of doors, windows, rooms and any other items are approximate and no responsibility is taken for any error, omission, or mis-statement. This plan is for illustrative purposes only and should be used as such by any prospective purchaser. The services, systems and appliances shown have not been tested and no guarantee as to their operability or efficiency can be given.
Made with Metropix ©2016



£2,773 PCM

IMPORTANT NOTE: These particulars and the descriptions and measurements herein do not constitute representation and whilst every effort has been made to ensure accuracy, this cannot be guaranteed.

